



Kildare County Council
Comhairle Contae Chill Dara

AECOM

Newbridge Local Transport Plan

– Phase 1 Consultation

Consultation Summary Document



Kildare County Council
Comhairle Contae Chill Dara

AECOM

Introduction to the Newbridge Local Transport Plan

Introduction to the Newbridge Local Transport Plan

- A transport plan is being developed which will propose measures to improve walking, cycling, public transport, roads and parking in Newbridge and its environs
- The plan will place particular focus on improving conditions for pedestrians, cyclists and public transport users
- Measures from the transport plan will be incorporated into the new Local Area Plan for Newbridge and its environs
- This document presents information based on Census 2016 and Census 2022 where available to give an indication of the existing transport situation in the Newbridge. When developing the transport plan, 2022 data will be used when it is published and available.

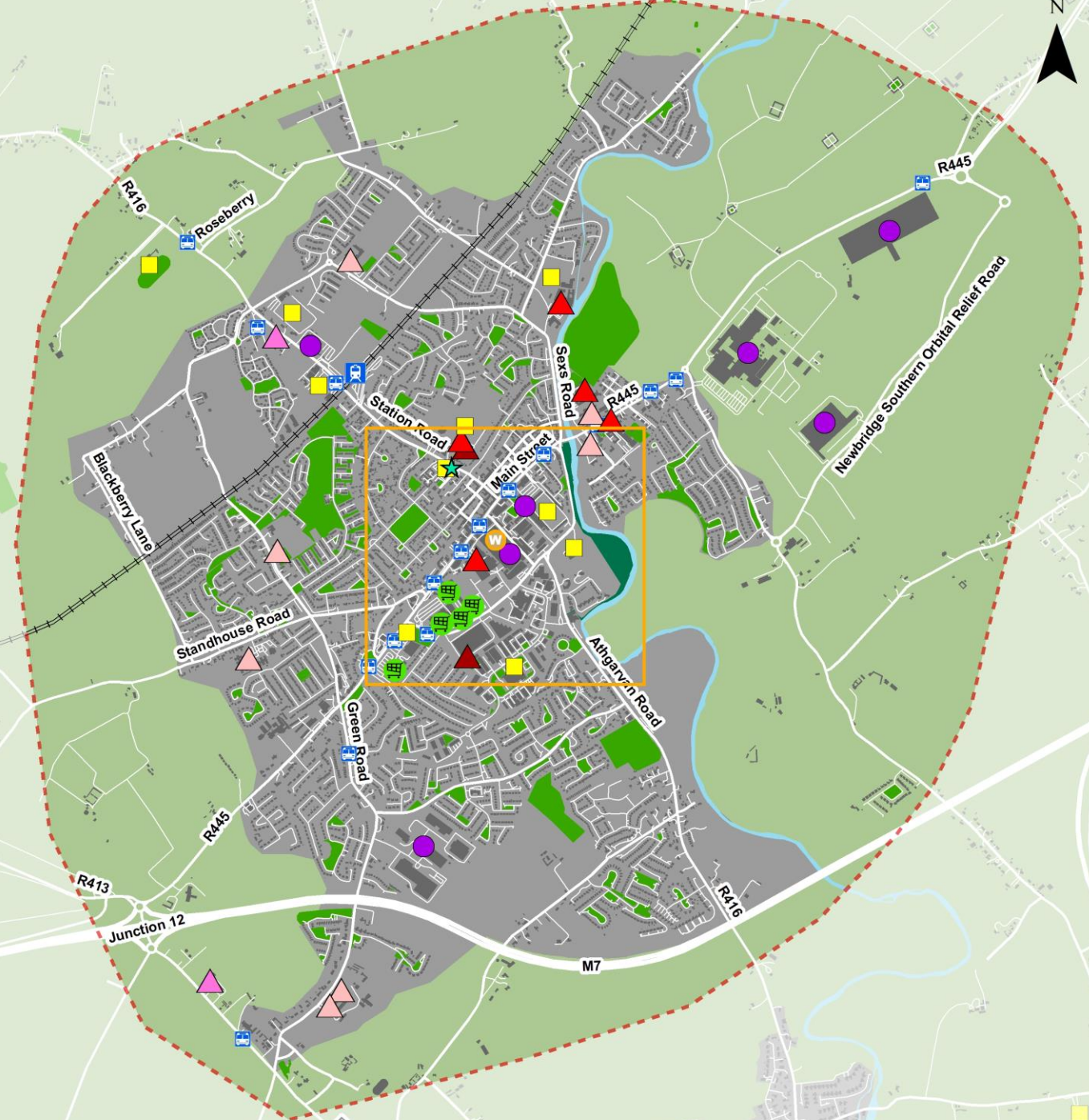
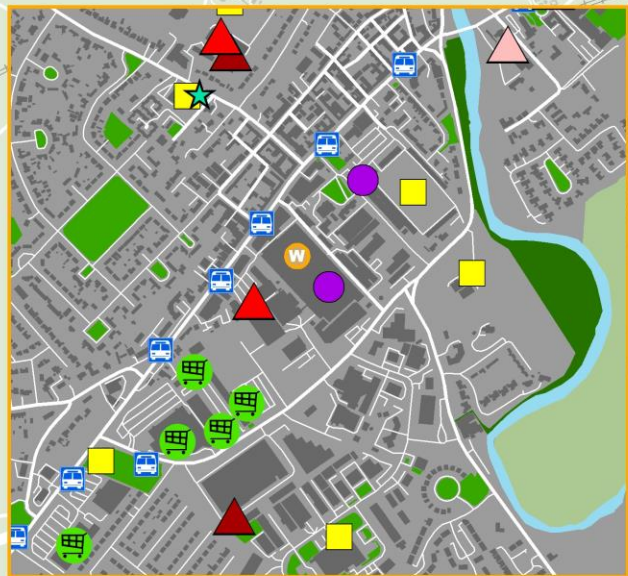


Newbridge Local Transport Plan Study Area

Legend

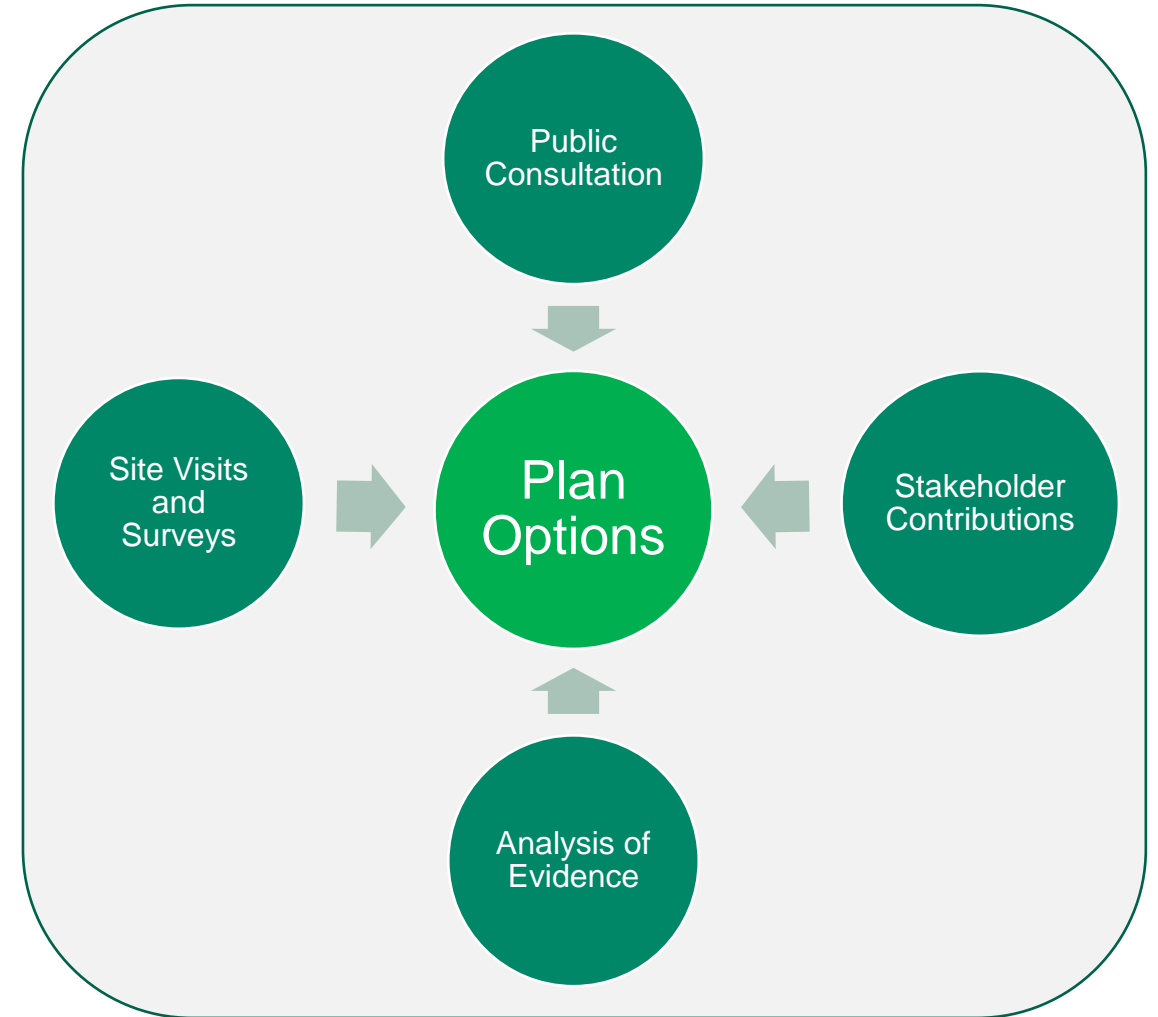
- Study Area
- Train Station
- Bus Stop
- Supermarket
- Whitwater Shopping Centre
- Primary School
- Secondary School
- Further Education
- Special School
- Large Employer
- Sports Facility
- Playground
- Liffey Linear Park

Town Centre



Purpose of Phase 1 Consultation Process

- This consultation process seeks to gather views on existing transport issues and ideas for improvements
- A survey of residents, visitors to Newbridge and organisations will start on 3rd August and conclude on the 14th September
- Workshops are being held with Councillors, state agencies and schools
- Information gathered during consultation will feed into the development of plan options



Next Stages in Plan Development

- This initial phase of consultation is taking place at an early stage in plan development to inform the creation of options
- The views collected will be considered during the assessment of options to create the draft transport plan
- In several months, there will be another stage of public consultation to consider the draft transport plan and receive feedback on proposed measures





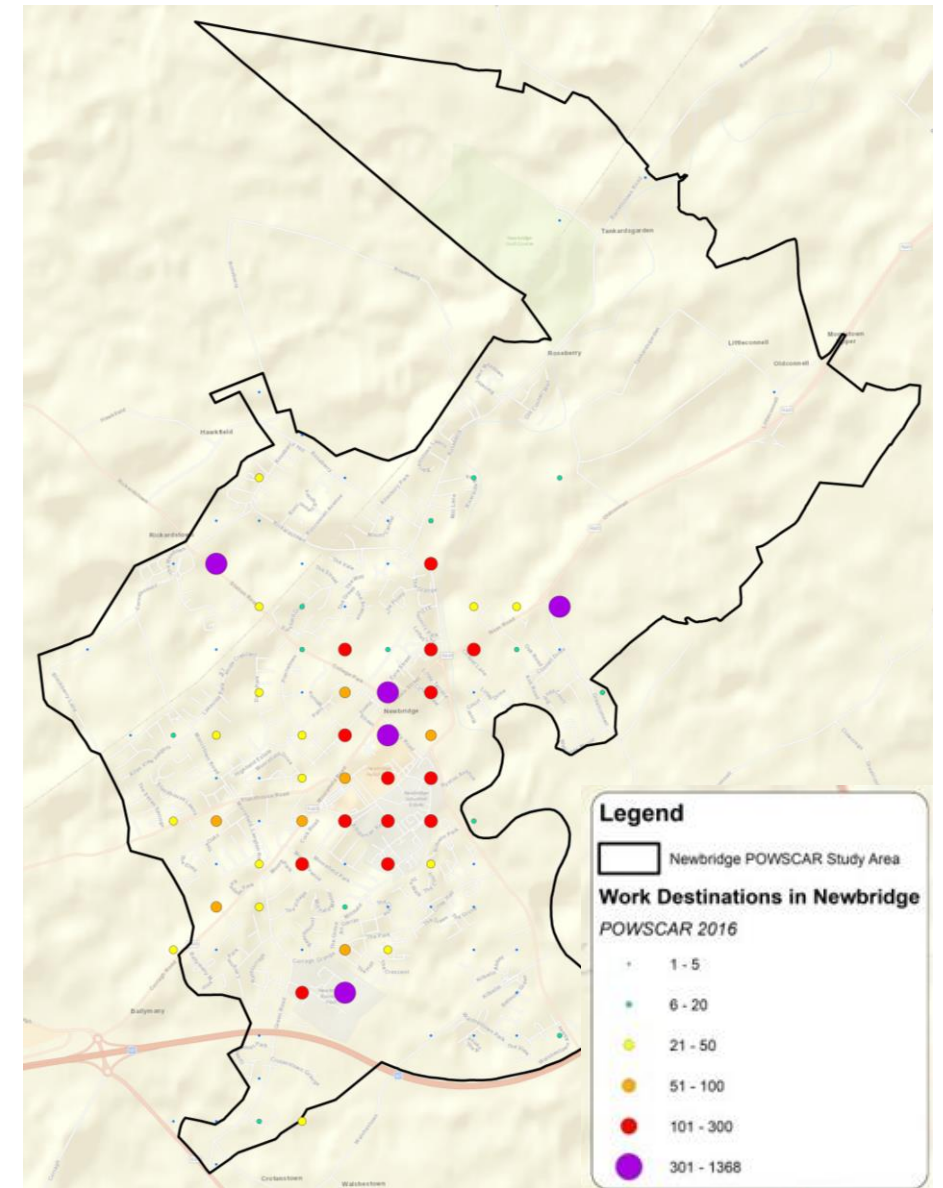
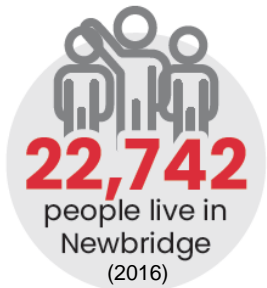
Kildare County Council
Comhairle Contae Chill Dara

AECOM

Key Population and Transport Statistics in Newbridge

Population Growth in Newbridge

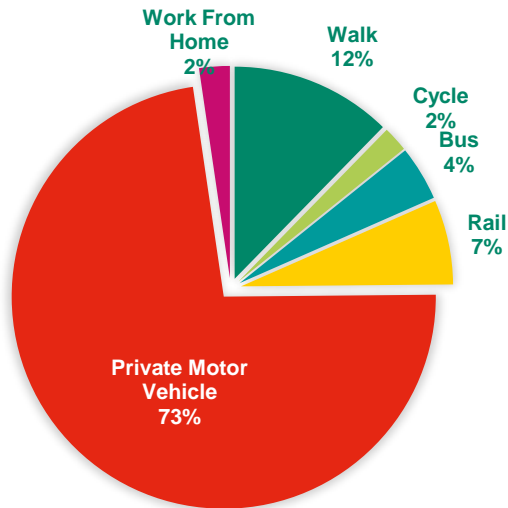
- Co. Kildare's population grew by 11% between 2016 – 2022 census periods.
- Newbridge grew by 6% between 2016 – 2022 to approx. 24,000 people.
- Numerous developments / Strategic Housing Developments are currently at construction (e.g. Belin Woods, Curragh Farm, Station Walk) or at the planning phase (e.g. Aston Ltd – Great Connell, Briargate Dev. - Ballymany)
- Key local job destinations are the town centre and Whitewater, Newbridge Business Park, Department of Defence and Lidl, Pfizer KDP Ireland



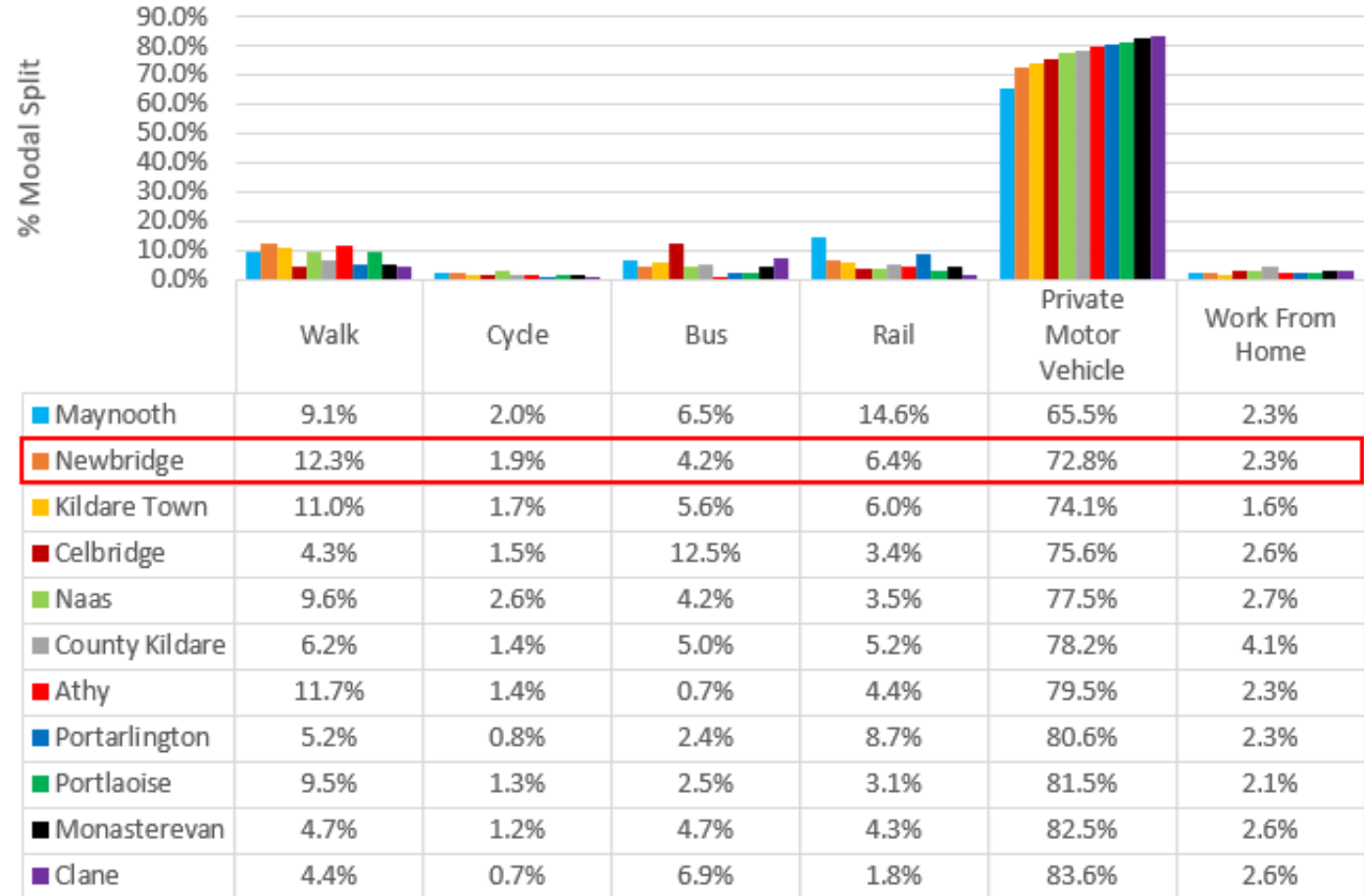
Map Description: Location of Jobs in Newbridge (2016 Census)

Modal Split – Work Trips (2016)

- 73% of residents drive to work
- Level of car use for work trips is high considering access to good quality rail and bus alternatives
- Plan will encourage use of public transport and walking/cycling



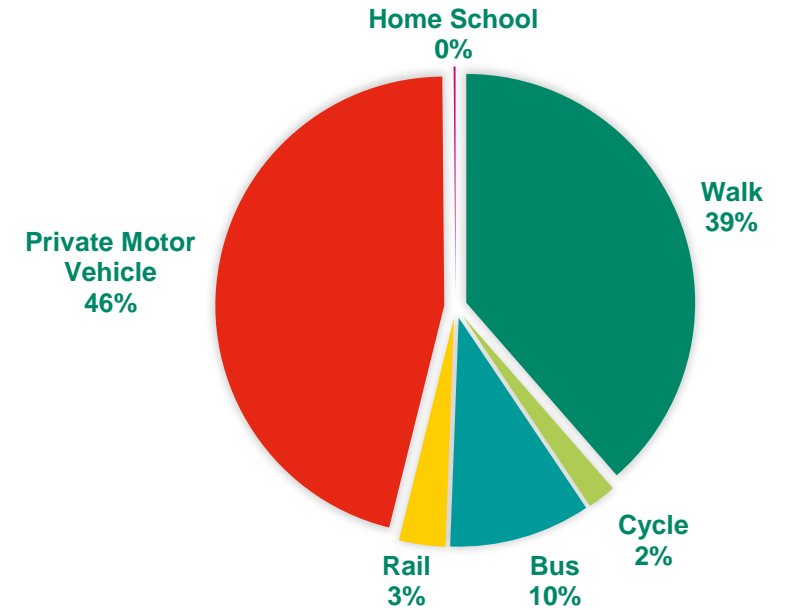
Graph Description: Mode of Travel Used by Newbridge Residents to Travel to Work (2016 Census)



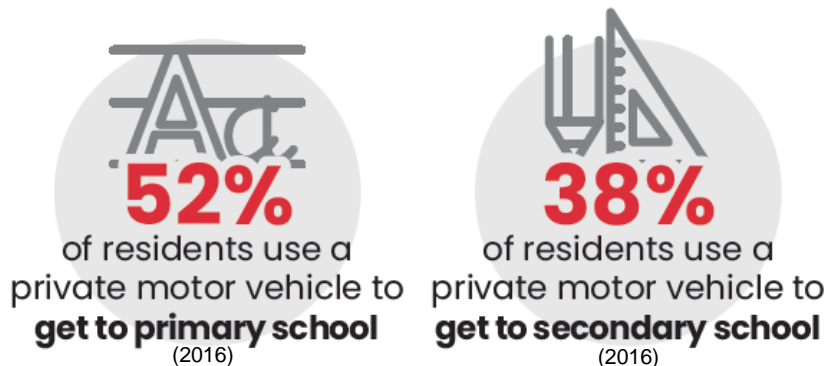
Graph Description: Mode of Travel Used by Newbridge Residents to Travel to Work – Compared to Other Towns in Kildare (2016 Census)

Modal Split – Education Trips (2016)

- 46% of education trips (school and college combined) take place by car but this percentage is higher for primary school trips
- With a good spread of primary schools across Newbridge there may be scope to improve the walking mode share to primary schools.
- The centralised nature of secondary schools concentrated around the town centre there may be scope to improve the public transport, cycling and walking mode shares to secondary schools.



Graph Description: Mode of Travel Used by Newbridge Residents to Travel to School and College (2016 Census)





Kildare County Council
Comhairle Contae Chill Dara

AECOM

A Brief Overview of Transport Issues in Newbridge

Walking and Cycling Barriers

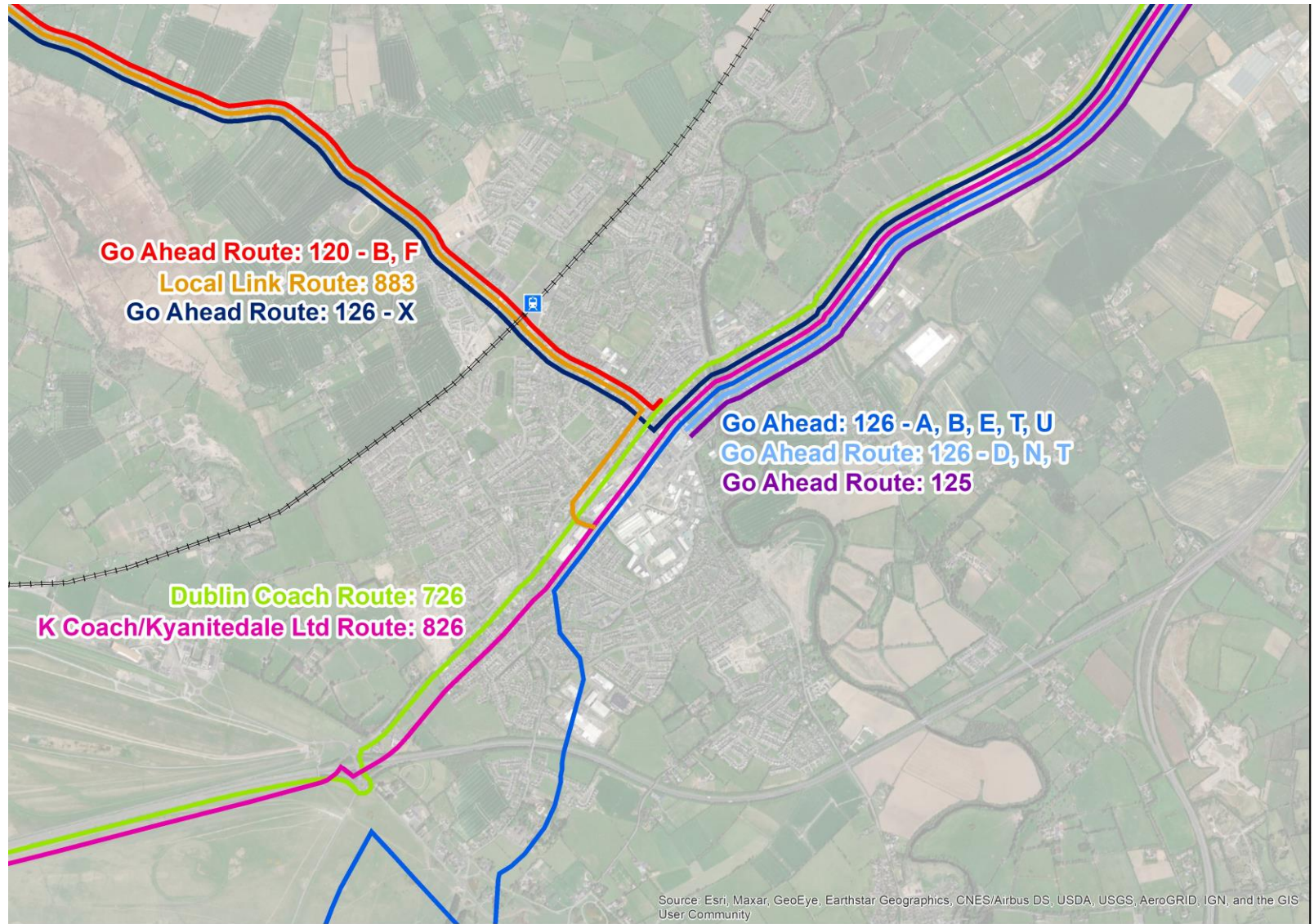
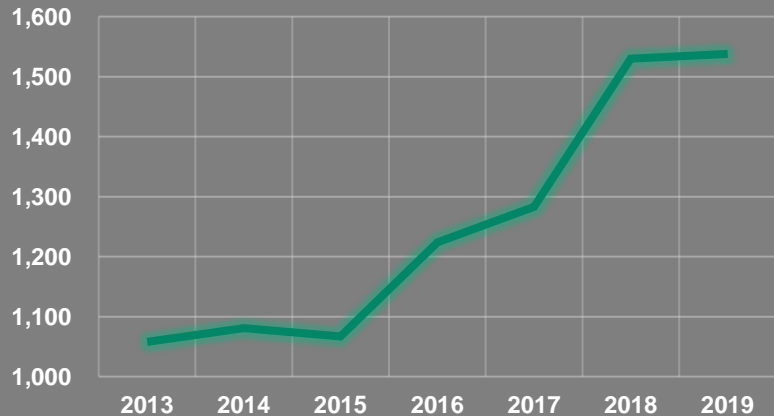
- Shorter distance trips encourage the use of walking and cycling
- Linear barriers (e.g. River Liffey, railway, motorway) can result in longer journeys which encourage car use
- Single entrance developments can make it hard to travel between nearby areas, causing longer indirect walking and cycling trips
- The plan will seek to make it easier and quicker to walk and cycle to destinations



Public Transport

- Significant growth in rail use at Newbridge station since 2013.
- Newbridge is served by many bus routes but these are centralised in the town centre and Station Road with no services south of Edward St.

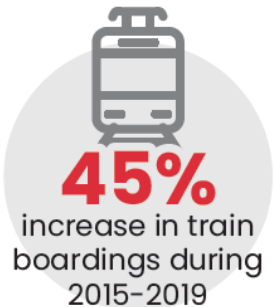
DAILY BOARDINGS AT NEWBRIDGE TRAIN STATION



Frequency of Rail Services From Newbridge

- Both intercity and commuter services call at Newbridge Station.
- Newbridge is just outside the short hop zone which finishes at Naas / Sallins.
- Services using the Phoenix Park Tunnel Line also call at Newbridge station.
- The morning peak period, 07:00 - 10:00, has the highest number of services calling at Newbridge Station with 15 services calling over the 2 hour period.

Origin	Destination	< 07:00	07:00 - 10:00	10:00 - 17:00	17:00 - 19:00	> 19:00	No. Services Daily
Portlaoise	Heuston Station	2	3	7	1	5	18
Athlone		1	1	0	0	0	2
Kildare		1	0	0	0	1	2
Carlow		0	1	0	0	1	2
Limerick		0	1	0	0	0	1
Galway		0	1	0	1	1	3
Waterford		0	2	2	0	0	4
Westport		0	1	0	0	0	1
Newbridge		0	2	0	0	0	2
Newbridge		Grand Canal Dock	1	3	1	1	0
Total		5	15	10	3	8	41



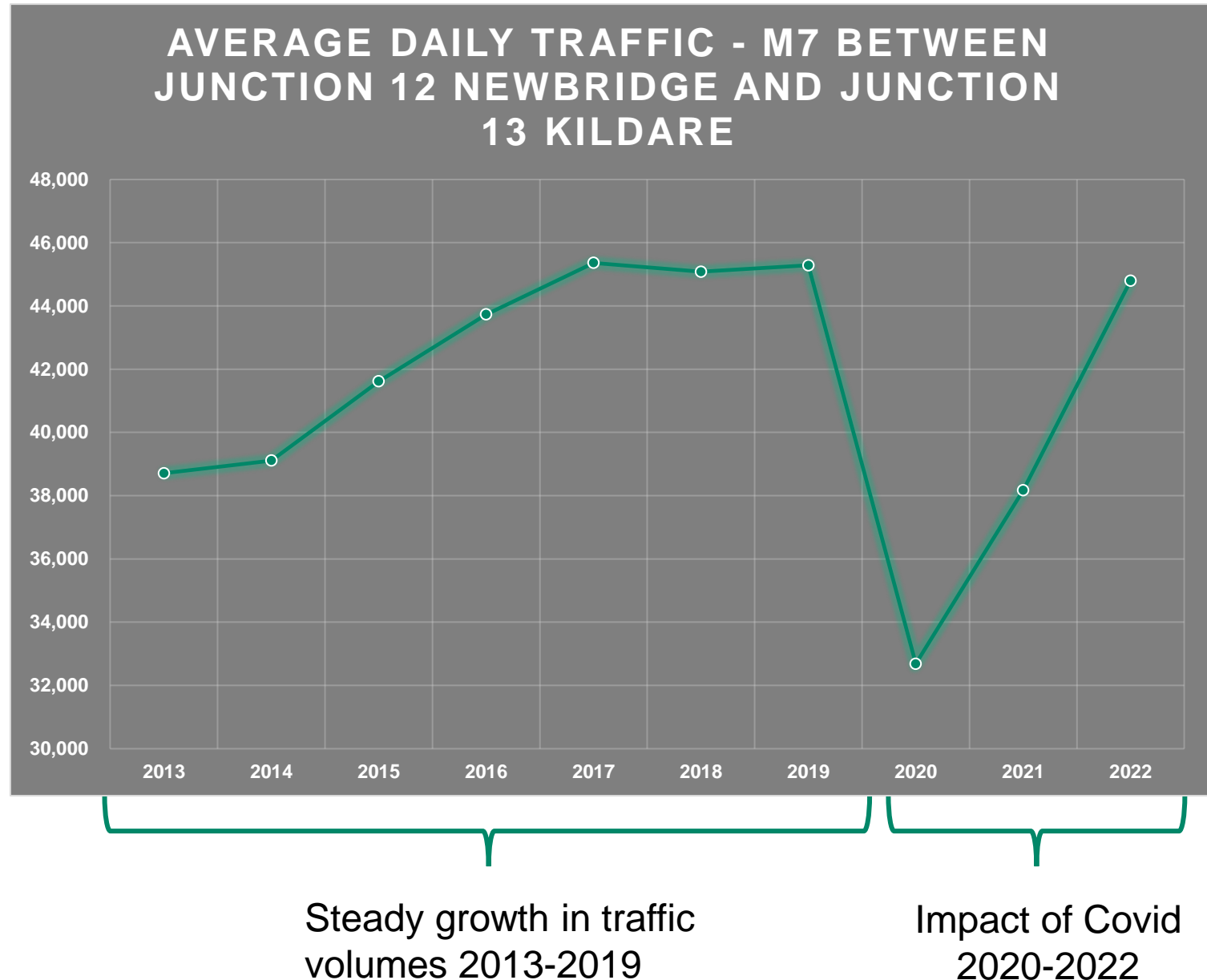
Frequency of Bus Services From Newbridge

Operator	Route	Origin	Destination	< 07:00	07:00 - 10:00	10:00 - 17:00	17:00 - 19:00	> 19:00	No. Services Daily
GoAhead Commuter	120B	Newbridge	Mayor Street Lower, Dublin	0	0	3	0	0	3
		Connolly Station	Newbridge	0	0	3	0	0	3
	120F	Newbridge	Merrion Sq West, Dublin	1	0	0	0	0	1
		Connolly Station	Newbridge	0	0	0	0	1	1
	125	Newbridge	UCD	1	0	0	0	0	1
		Kildare St	Newbridge	0	0	0	1	0	1
	126	Kildare/Newbridge	Mayor St Lwr	3	6	12	3	5	29
		Connolly Station	Kildare/Newbridge	3	4	11	5	9	32
	126A	Rathangan	Mayor St Lwr	0	0	1	0	0	1
		Mayor St Lwr	Rathangan	0	0	1	0	0	1
	126B	Kildare	Mayor St Lwr	0	0	1	0	0	1
		Mayor St Lwr	Kildare	0	0	0	0	0	0
	126D	Newbridge	DCU Collins Avenue	1	0	0	0	0	1
		DCU Collins Avenue	Newbridge	0	0	1	0	0	1
	126E	Kildare	Mayor St Lwr	0	2	0	0	0	2
		Mayor St Lwr	Kildare	0	0	0	0	0	0
	126T	Newbridge	Mayor St Lwr	0	1	0	0	0	1
		Mayor St Lwr	Newbridge	0	0	1	0	0	1
126X	Rathangan	Mayor St Lwr	0	1	0	0	0	1	
	Mayor St Lwr	Rathangan	0	0	0	1	0	1	
Dublin Coach	726	Portlaoise	Red Cow/Airport	7	3	7	2	5	24
		Red Cow/Airport	Portlaoise	7	3	7	2	5	24
Local Link - Kildare and south dublin	883	Athy	Newbridge	0	1	2	1	0	4
		NewBridge	Athy	0	1	2	1	0	4
K Coach/Kyanitedale Ltd	826	Monasterevin	Naas	0	3	4	2	0	9
		Naas	Monasterevin	0	2	5	1	1	9
Total - Arrivals / Departures				23	27	61	19	26	156

- Newbridge is served by 6 bus routes on a daily biases including the 126 and its 6 variants and 2 variants of the 120.
- The most frequent services are the 126 operated by Go Ahead Commuter and the 726 operated by Dublin Coach

Traffic Levels

- Prior to Covid-19, traffic was growing steadily on the M7
- While greater amounts of remote working may reduce traffic levels in the future, managing congestion will remain an issue
- The road plan will seek to facilitate population growth, while managing traffic in the town centre to support travel by active modes and buses





Kildare County Council
Comhairle Contae Chill Dara

AECOM

Public Consultation – How to Contribute to the Transport Plan

Information on Phase 1 Consultation Process

The Phase 1 Public Consultation Process is taking place from Wednesday 3rd August to Wednesday 14th September 2022

An online survey will gather views from the public on transport issues in Newbridge

Numerous stakeholders will also be contacted as part of the consultation, including schools and state agencies

A workshop will take place with Kildare-Newbridge Municipal District Councillors

- Kildare County Council wishes to invite feedback from members of the public on transport issues in Newbridge, and its environs, to inform the development of a transport plan

Link to the Consultation Survey

- An online survey will run between **Wednesday 3rd August and Wednesday 14th September 2022** on the Kildare County Council's Public Consultation Portal

Link: <https://consult.kildarecoco.ie/en/content/newbridge-area-based-transport-assessment-abta-project-public-consultation-no-1>.

- Submissions or observations can also be made in writing to:

*Senior Executive Officer
Roads, Transportation and Public Safety Department
Kildare County Council
Áras Chill Dara
Devoy Park, Naas
Co. Kildare, W91 X77F*

Thank you for your participation

AECOM Delivering a better world

