

Legend :

- Local Area Plan Boundary
- CSO Settlement Boundary 2016 (centred on middle line)
- A: Town Centre (M2)
- B: Existing / Infill Residential (R2.6)
- C: New Residential (R1.6)
- C: New Residential Phase 2 (R1.6)
- E: Community & Education (S1,S2,S6)
- F: Open Space & Amenity (G4, G3)
- F2: Strategic Open Space (G1: G3:)
- G: Green belt (G4, G3)
- I: Agricultural (P1)
- K: Commercial / Residential (Mixed Use) (M1)
- L: Leisure & Amenity (C5) (Tourism & Related)
- N: Neighbourhood Centre (M3)
- P: Data Centre (C7)
- Q: Office, Enterprise & Employment (C3)
- R: Retail / Commercial (C1.1)
- SR: Strategic Reserve
- T: Mixed-Use (C6)
- U: Utilities / Services (N)
- Approximate Line of Setback of Development From M7
- 500m Intervals From The Town Centre
- River/Canal/Lakes
- Key Development Areas
- Regeneration Lands
- MD Boundary Naas/Kildare-Newbridge
- MD Boundary Naas/Clane-Maynooth

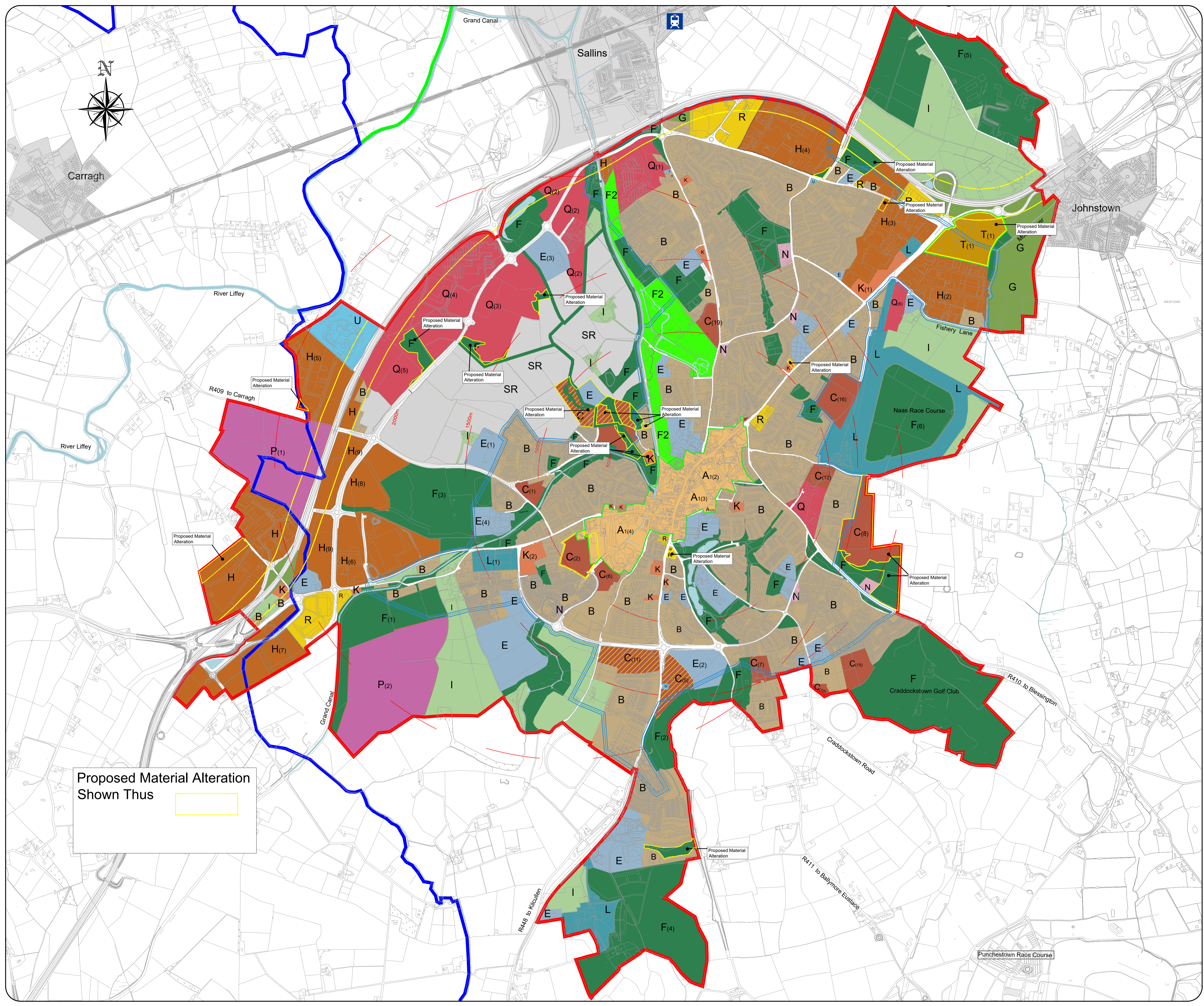
Stage	Date	Description
Draft	02/03/2021	Draft Plan
PMA	31/05/2021	Draft of Proposed Material Alteration

Land Use Zoning Map  
 Material Alteration

Scale:	N.T.S.	Map Ref.:	11.1
Date:	Mar 2021	Drawing No.:	200/18/916

Drawn by:	D.H Dolan	Checked by:	L Crawford	Approved by:	N Curran
Date:	02/03/2021	Date:	03/03/2021	Date:	05/03/2021

This drawing is to be read in conjunction with the written statement



Proposed Material Alteration  
 Shown Thus